

Faculty Internships

Johnson County Community College, in partnership with the OneKC WIRED grant, has established a summer internship program in the Biotechnology/Biomedical arena.

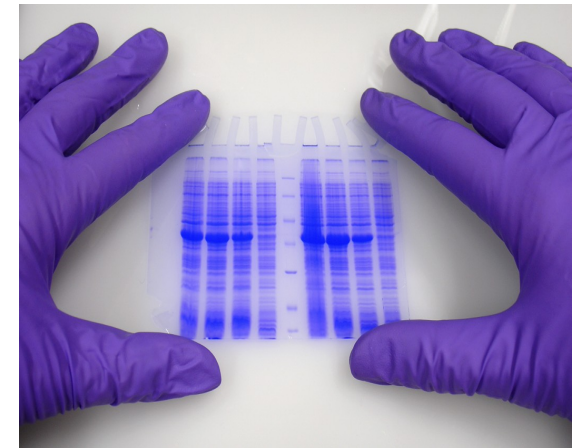
This unique opportunity will assist you in integrating your teaching skills and curriculum with day to day workforce operations. You will be working one on one with Biotechnology/Biomedical companies in the area learning about their processes and procedures while gaining valuable knowledge regarding the science industry. Sequentially, you can then pass along the knowledge you gained to your students interested in that field. In addition, stipends are available for a maximum of 4 weeks at the amount of \$100 per day.

The attached brochure will outline the program and provide further detail about the schedule.



JOHNSON COUNTY COMMUNITY COLLEGE

Biotechnology Educator Workshops



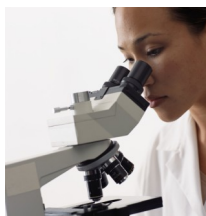
JOHNSON COUNTY COMMUNITY
COLLEGE

12345 College Blvd
Overland Park, KS 66210-1299
913.469.8500
www.jccc.edu

IN PARTNERSHIP WITH
ONEKC WIRED



Biotechnology Workshop for Educators



Biotechnology encompasses many skills that harness biological organisms or biological processes, which could be profitably used in medicine and agriculture. This program will help update your knowledge and familiarize you with biotechnology laboratory technique and provide you with strategies to teach biotechnology in the classroom. Participants will participate in a hands-on workshop that introduces biotechnology laboratory skills such as DNA typing and Forensic Science experiments. Discussions will also focus on the JCCC Biotechnology program and will include information about courses offered (on-campus and online) and current Biotechnology programs in area schools.

There will be no charge for this course and it is open to teachers only. A stipend will be provided to all teachers who attend.

Date: June 12, 2009
9:00am – 4:00pm
CRN 51822

Date: June 19, 2009
9:00am- 4:00pm
CRN 51823

Instructor: Luanne Wolfgram

Advanced Biotechnology Workshop for Educators

For teachers that have attended the introductory Biotechnology workshop. This program will help update your knowledge and familiarize yourself with further biotechnology laboratory techniques and provide you with strategies to teach biotechnology in the classroom. This workshop will augment the skills you've gained at our previous summer workshops in 2007, 2008, and 2009. Participants will engage in a hands-on workshop in bioinformatics and protein based experiments. Discussions will focus on the Johnson County Community College Biotechnology program and will include information about courses offered for high school students and current Biotechnology programs in area schools.

There is no charge for this course and a stipend will be provided to teachers who attend.



Date: June 10, 2009
9:00am- 4:00pm
CRN 51824

Date: June 26, 2009
9:00am- 4:00pm
CRN 51825

* June 26 class will not open until 6/10 class fills *

Instructor: Luanne Wolfgram

Johnson County Community College
12345 College Blvd.
Overland Park, KS 66210
Regnier Center
Room 370

To register for these classes:
Please contact Continuing Education
Registration at 913.469.2323

If you have additional questions please
contact Megan Gray
Email: mgray32@jccc.edu
Phone:
913-469-8500 Ext. 4270



In partnership with
OneKC WIRED

